

SPIRAL HZ[®]

H I G H P E R F O R M A N C E H U R R I C A N E Z O N E D O O R

The Only High Speed Door Engineered to Withstand a Hurricane.

The first, and only, high performance door engineered and certified to withstand category-four hurricane force winds. With an opening speed of up to 60 inches per second, the Spiral Hurricane Zone (HZ) door is fast. Rigid aluminum slats with reinforced hinges combined with the galvanized steel side columns offer security and the strength to handle a hurricane.

Crisp lines give the Spiral HZ door a stylish, high-tech look. Because its anodized aluminum will not corrode, you can count on that look to last for many years under even the worst weather conditions.

Wind Resistant - Certified and tested to withstand winds in excess of 149 miles per hour. Extensive laboratory testing and certified compliance with the Miami-Dade County* and Florida Building Code.

High Security - Rigid, aluminum slat construction and optional, integral locking system provides unparalleled security.

Fast - Opens at up to 60 inches per second for improved traffic flow.

Whisper Quiet - The unique Spiral roll-up design features no metal-to-metal contact, therefore offering whisper quiet operations.

Energy efficient and Tight Seal - Aluminum slats, along with durable rubber membrane which covers the reinforced hinges, provide a 100% seal against dust pollution, drafts, and inclement weather. Insulation is standard.

* Notice of Acceptance (NOA)
Certification: Application Pending



RYTEC
CORPORATION

Driving The Door Industry.SM

SPIRAL HZ[®]

HIGH PERFORMANCE HURRICANE ZONE DOOR

Specifications: Subject to change

Model: Rytec[®] Spiral[®] HZ Door

Standard Size: Up to 16 feet wide by 21 feet high.

Door Panel: Double-walled aluminum slats are 6 inches high by 1 3/16 inches thick. Integral rubber weatherseal between each panel.

Side Frames: Galvanized steel side frames with full height weatherseal on both sides to seal against door panel. Dual electric photo eyes are standard. Optional stainless steel package available.

Counterbalance: Up to 6 extension springs in each side column, depending on the size of the door. The springs assist the motor in opening the door. Mechanical egress lever on the side column allows the door to be opened in the event of a power failure.

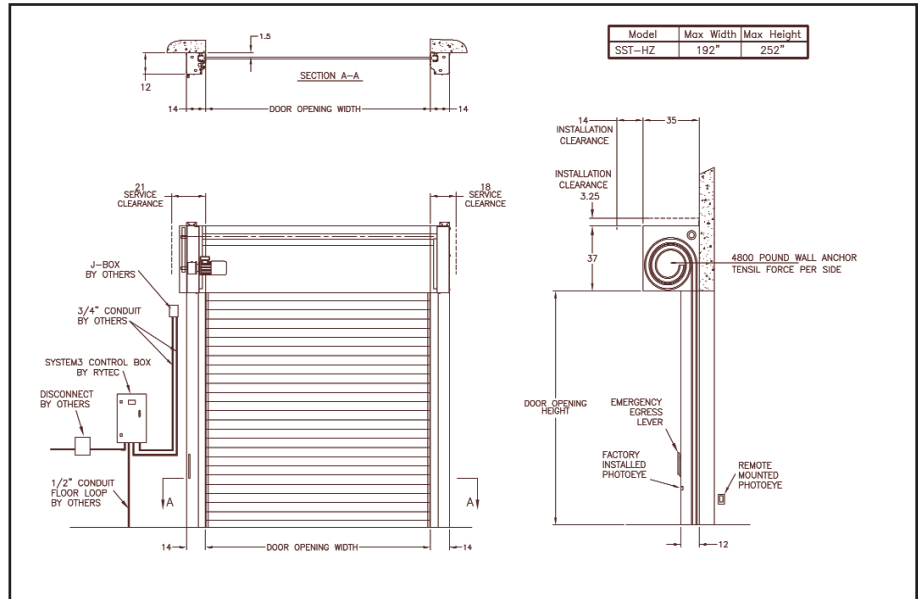
Drive System: Three-phase, variable speed AC Drive provides soft acceleration and deceleration. Independent opening and closing speeds provide flexibility to accommodate any application.

Travel Speed: Opens at up to 60 inches per second.

Electrical Controls: System 3[®] controller is housed in a NEMA 4 rated enclosure with factory set parameters. Self-diagnostic features and a two-line, 32 character LCD display in English, Spanish or French provide quick and straightforward installation and control adjustments. Programmable inputs and outputs accommodate special control requirements without the need for additional electrical components.

Warranty: One-year limited warranty on materials and workmanship.

Certification: Florida Miami-Dade County Compliance, Product Control Division, Notice of Acceptance (NOA) Certification: Application Pending.



Rubber Weatherseal
Integral rubber weatherseal between anodized aluminum slats is replaceable for easy maintenance.



Extensive Testing
The Spiral HZ door is certified and tested to withstand winds up to 149 miles per hour.



System 3 Controller
Makes programming and troubleshooting easier, more flexible and more precise than ever.



Rubber Weatherseal
Patented Spiral track and rollers permit quiet and low maintenance operation.

Compact Motor
AC Drive motor is compact and variable speed, with soft acceleration and braking for smooth starts and stops.



One Cedar Parkway
Jackson, WI 53037-0403
Phone: 262-677-9046
Fax: 262-677-2058
Toll Free: 888-GO-RYTEC
Email: info@rytecdoors.com
Web: www.rytecdoors.com